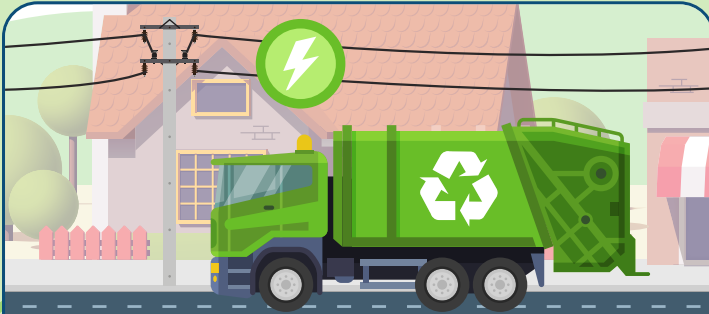


# AVOID OVERHEAD POWER LINE CONTACT

## HEAVY TRUCK OPERATOR ELECTRICAL SAFETY



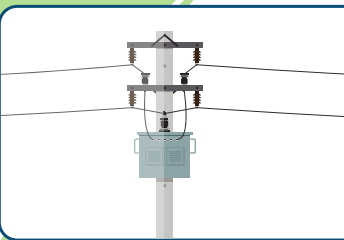
According to the Occupational Safety and Health Administration, **heavy truck operators have a high number of workplace electrical fatalities.** Remember Your **GOAL: Get Out And Look**



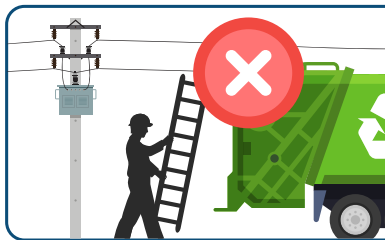
**76%** of heavy truck operator electrical fatalities occurred from **contact with overhead power lines.**



Keep raised truck beds at least **10 feet** away from all power lines.



Locate and identify **utilities**, such as overhead power lines, before starting work. **Call 811** before you dig.



Look for **overhead power lines** when operating any equipment.



Have **'look up'** signage to remind operators to look above for overhead power lines or obstructions **before lifting the body.**



Make sure your trucks have a **warning system** — alarms, flashing lights inside or outside the cab — that **turns on when the body is raised.**

Voltage

Safe Distance

\*Kilovolt (Kv)

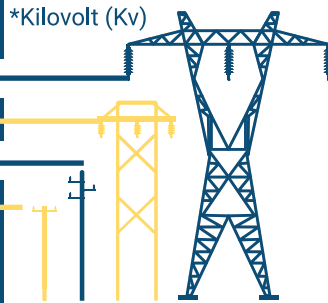
500 Kv – 800 Kv 19 – 24 Ft

230 Kv – 362 Kv 13 – 16 Ft

41.1 Kv – 169 Kv 10 – 12 Ft

<50 v – 46 Kv 10 Ft

Know and maintain **safe distances** from power lines.



If you contact an overhead power line or pole, **stay in your truck, tell others to stay away, and call 911.** Only exit your truck if there is **smoke or fire.**

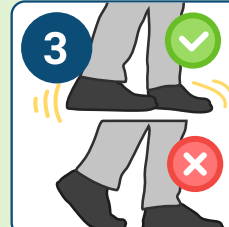
### In the Event of Fire or Smoke



Do not touch the ground and vehicle **at the same time.**



Jump from the vehicle with **your feet together.**



**Shuffle** at least 50-70 feet away, or about 6 truck lengths, and **avoid lifting your feet.**